

# Quick Start Guide

## Smart Air Purifier Q1000 Ultra



# CONTENTS

01

## **Product Overview**

- i. Know your Smart Air Purifier
  - ii. Control Panel
- 

02

## **Filter Setup & Maintenance**

- i. Installing the Filter
  - ii. Cleaning the Filter
  - iii. Replacing the Filter
- 

03

## **Optimal Placement for Your Smart Air Purifier**

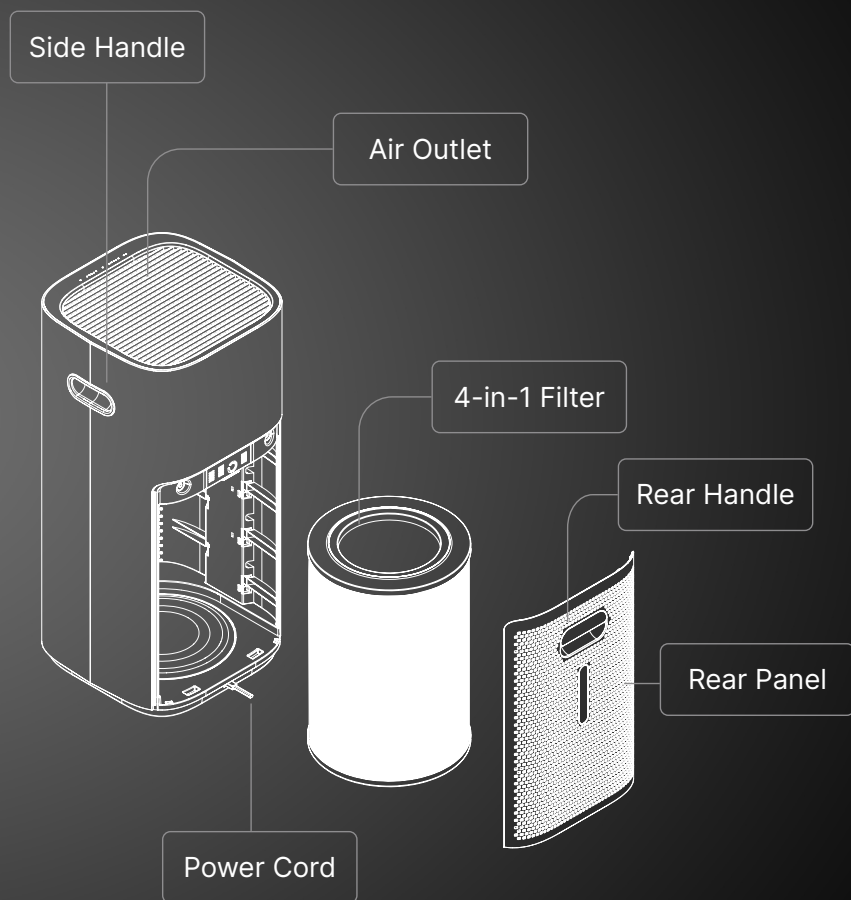
04

## **Qubo App**

- i. Connect Your Air Purifier to Qubo App
- ii. App Features & Controls
- iii. Remote Control

# Product Overview

## Know your Smart Air Purifier



Images in the Quick Start Guide are just representative of the devices and are for the purpose of guiding through the initial set-up process only

# Control Panel



## QSenseAI

Turn the QAI/Child  
Lock mode on/off



## Timer

Set 1h/2h/4h/8h/16h



## Power

Turn on/off



## Fan Speed

Choose Auto/Sleep/1/2/3  
fan speed



## Filter Reset

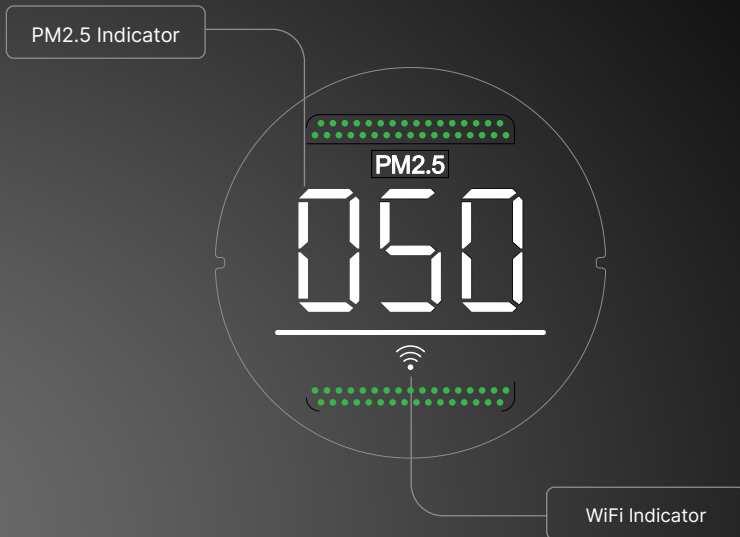
Long press the Filter  
button to reset the filter



## Child Lock

Long press QSenseAI for  
three seconds to turn on  
the Child Lock mode

# Display Panel

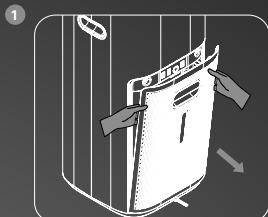


## Why PM2.5 Matters the Most?

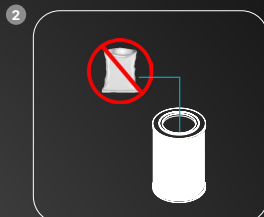
- 1. Direct Measurement of Harmful Particles**  
Measures the fine particles inside your home that really affect your health.
- 2. Real-Time Insights**  
Shows the air quality in your room instantly, while AQI is based on outdoor averages and doesn't reflect what you're actually breathing indoors.
- 3. Immediate Action**  
Lets you adjust your purifier or reduce pollution right away.

# Filter Setup & Maintenance

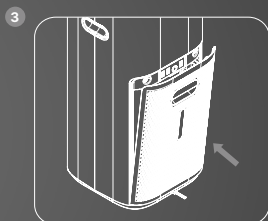
## Installing the Filter



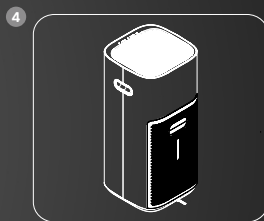
Remove the rear panel as shown here



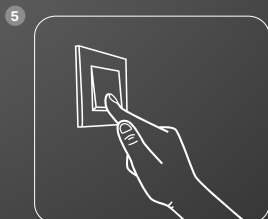
Pull out the filter and remove the polybag from the filter



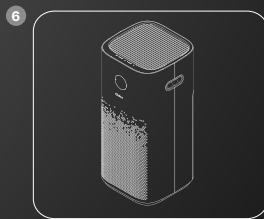
Place the filter back inside & close the panel



Close the rear panel properly otherwise the device will show an error



Switch on the purifier & connect to the Qubo App

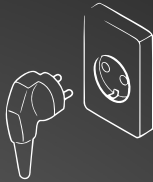


Make sure the air purifier is placed properly

Images in the Quick Start Guide are just representative of the devices and are for the purpose of guiding through the initial set-up process only

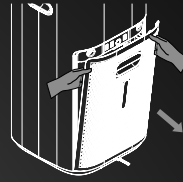
# Cleaning the Filter

## Step 1



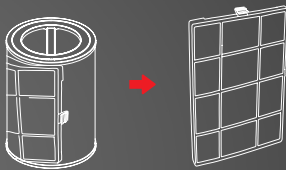
Turn off and unplug the air purifier

## Step 2



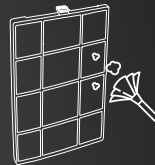
Remove the rear panel as shown here

## Step 3



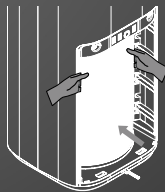
Detach the Velcro to separate the pre-filter from the main filter

## Step 4



Clean the filter with dry cloth and place it back

## Step 5



Place the filter back in the air purifier

## Step 6



Reattach the rear panel as shown here

## Cleaning Frequency

- **Pre-Filter:** Once in every month.\*  
*\*When the air is more polluted, clean the pre-filter with dry cloth once a month for best performance.*
- **Replacing the Filter**  
Replace the main filter once a year.\*  
*\*Subject to actual usage.*

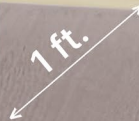
Images in the Quick Start Guide are just representative of the devices and are for the purpose of guiding through the initial set-up process only

# Place Your Air Purifier



**Seal the room:** Close the windows and doors to prevent outside air from slowing down the purification process.

**Maintain distance:** Place your air purifier at least 1 foot away from the walls to ensure optimal airflow and purification.



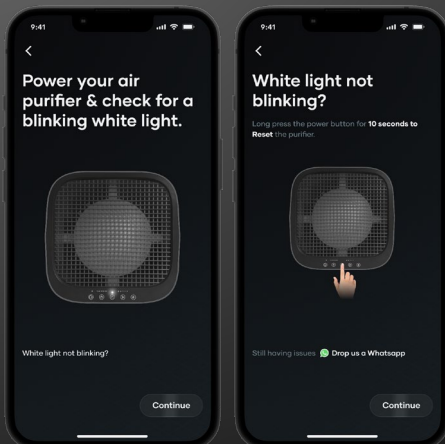
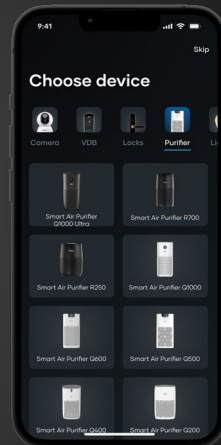
# Qubo App

## Connect Your Air Purifier to Qubo App



1. Scan the QR code to download the Qubo App.
2. Sign up to create your account with Qubo.

3. Switch on your Smart Air Purifier.
4. Tap on the Menu.
5. Tap on 'Add Devices'.
6. After choosing the device's location, tap on 'Purifier' and select Q1000 Ultra.

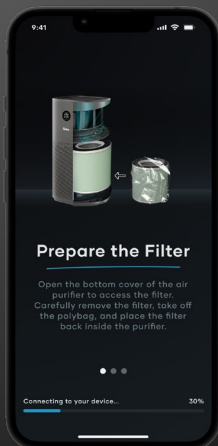
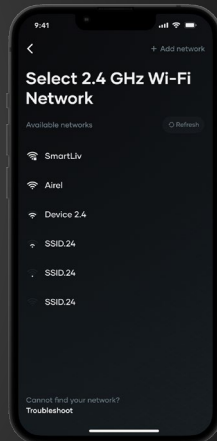


7. Tap on 'Yes' if you see the white light blinking on the device. If you do not spot the light blinking, long press the 'Power button' for 10 seconds and reset the device.



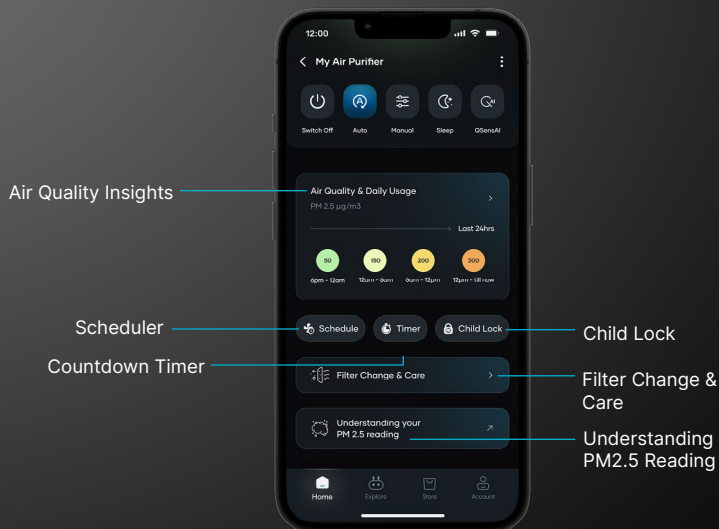
8. The app will search for the air purifier via Bluetooth. Make sure your Bluetooth is turned on to discover the device.
9. After scanning, select 'Q1000 Ultra' in the 'Add Device' section.
10. Name your air purifier and attach a location to it.

11. Enter your Wi-Fi ID and password. Make sure you are on a 2.4Ghz Wi-Fi network.
12. After setup is complete, tap on 'Continue'.



13. On successful authentication of Wi-Fi, your device will be connected to the app.

# App Features & Controls



# App Features & Controls

Feature	Description
<b>Power Button</b>	Switch on/off remotely via app
<b>Auto mode</b>	Automatically changes the fan speed based on the PM2.5 pollutants in the room
<b>Sleep Mode</b>	Super silent air purification with display turned off for undisturbed sleep
<b>Manual Mode</b>	Manually change the fan speed of the air purifier to control purification in the room
<b>QSensAI</b>	Senses PM2.5 pollutants and automatically switches on & off the air purifier based on ambient air quality, ensuring efficient purification
<b>Insights</b>	Track indoor and outdoor PM2.5 levels and daily runtime. Use this data to schedule your air purifier usage for optimal performance and better indoor air quality control
<b>Child Lock</b>	With the Child Lock feature turned on via the Qubo App, you can disable all the physical buttons of your air purifier
<b>Schedule</b>	You can schedule your air purifier to fit your daily routine. Choose the days of the week, the time, and even the purifier's functions (like power, mode and fan speed) to suit your needs
<b>Countdown</b>	Set a timer for the air purifier to automatically turn off after 1, 2, 4, 8 or 16 hours

# Control Remotely



1. Switch on your Smart Air Purifier
2. Open the Qubo App
3. Log in using the same account credentials that you used to add the Air Purifier
4. Select the Air Purifier you want to control



**Scan the QR code for  
any product related issues**