



# The QBOOK

Smart Bullet Camera



# Contents

1. Meet Qubo
2. What's in the box?
3. Let's take a closer look
4. What will you need?
5. Let's get started
6. Choose a location
7. Do's and Don'ts
8. Mount your Bullet Camera
9. Safety Guidelines
10. Support
11. Warranty Statement

# Meet QUBO

## Smart Bullet Camera

A versatile outdoor dynamo fit for any property. Bullet Camera is the solution to all your surveillance worries . Live monitor with vivid detail in HD video quality in almost any weather. Deter threats with AI powered Person detection, built-in security alarm, smart spotlights, category Leading 130° Field of View and get real-time intelligent alerts on Qubo App.



# What's in the BOX?

01.  
Bullet Camera



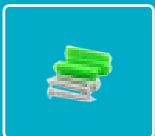
02.  
Power Adapter  
with cable



03.  
Screw KIT



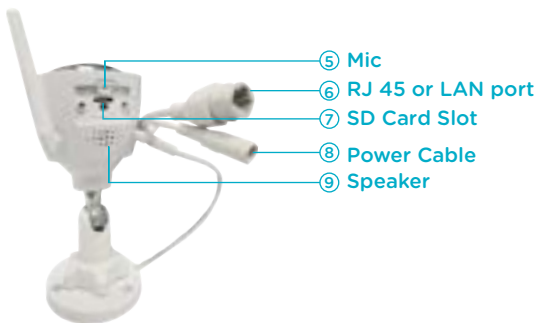
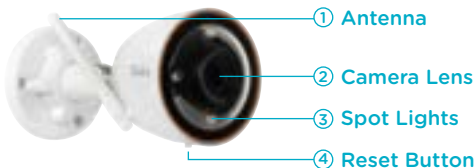
04.  
Weather resistance  
Connectors



05.  
Drilling Template



# Let's Take a closer **LOOK:**



LED Indication and Function	
Red LED blinking rapidly	Ready for setup
Red LED continuous	Not connected to Wi-Fi
Green LED continuous for 5 seconds	Device is ready
Green LED continuous	2-Way Talk begins

*Disclaimer : Depends if your model has Ethernet support or not.*

# What will you **NEED?**

## Wi-Fi Network

- 2.4 GHz Wi-Fi (802.11 b/g/n) network
- Greater than 2 Mbps network upload speed

## iOS

- iOS 11 or higher

## Android

- Android 8.1 or higher

## Power

- 12V – 1Amp

## SD Card

- Maximum 1 TB

# Let's Get Started:

## Step 1

Connect the adapter with the power cable that is attached in the bullet camera. After doing this, connect the adapter to a power source to turn on the Bullet Camera.



## Step 2

To Install the MicroSD Card: Make sure that the power supply to the camera is already disconnected. Adjust the camera lens upward until the MicroSD slot is visible, Unscrew two screw and insert the MicroSD card into the slot (the side with contact points must be facing down).



## Step 3

Factory Reset: Press and hold the Reset button to restore your device to factory settings. Data stored on the MicroSDXC card is not erased.



## Step 4

Download the Qubo App from Google Play or Apple App Store by clicking the below link or scan the QR code

<https://www.quboworld.com/apps>



## Step 5

Create an account on the Qubo App and follow the instructions to get started. If you are an existing Qubo user, you can simply go to Add Device on the Qubo App.



**Note 1:** Please use genuine MicroSDXC card manufactured by a qualified supplier and make sure that the storage capacity must be 1 TB or less

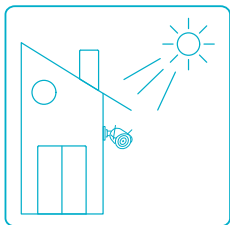
**Note 2:** It is highly recommended to set up the camera before mounting it.



# Precautions to choose a Location

## **Try to minimize exposure to direct sunlight.**

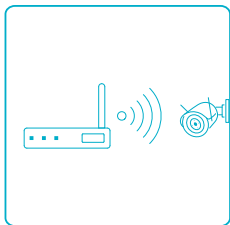
Qubo Bullet Camera is designed to operate between 0°C to 45°C



## **Keep it in range of your router.**

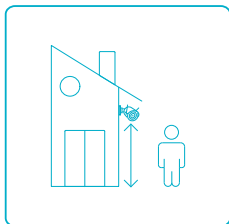
Install the Qubo Bullet Camera in range of your Wi-Fi network.

If you have an Ethernet port you can also install the camera through LAN cable



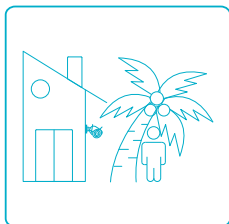
### Place it up high.

We find that 2-3 meters above the ground is best. Check live footage on the Qubo App to make sure you have clear view



### Consider the surroundings.

Is a pole, plant or porch light blocking the view? It might throw off exposure or interfere with camera vision. If you start noticing glare, adjust the camera angle.



# Mount your Camera

- Step 1** Drill three holes on the wall/ceiling with the help of drilling template provided with the product, It is recommended that you mark the locations of the holes with a pencil before drilling



- Step 2** Insert plastic anchors into the holes



- Step 3** Place the screws into the holes in the camera and mount the camera at the desired location by inserting the screws into the plastic anchors



# Safety Guidelines

Use responsibly. Read all instructions and safety information before use.

 Failure to follow these safety instructions could result in fire, electric shock, other injury or damage.

- Do not immerse the device in any kind of liquid.
- Do not attempt to dry the device using an external heat source such as a microwave oven or a hair dryer.
- Clean the device with a dry, soft cloth. Do not use abrasive or harsh chemicals.
- Keep the device and all its components out of reach of children and pets.
- Do not expose the device to steam or extreme temperatures. The safe operating temperature for this device is between 0°C and 45°C. Keep the device out of direct sunlight.
- This device does not have an on/off button. Unplug the power adapter to turn off the device.
- Only use the power adapter and cable included with the device. If the power adapter or cable appear to be damaged, stop using it immediately and contact Qubo Customer Care.

- Do not plug multiple devices into the same wall socket.
- Install the device in accordance to the building and city code.
- All Qubo products and services are meant for ages 18 and above.
- This device is meant to be used as a monitoring device for personal use only. This is not intended to be used as a safety product.
- This device does not alert, signal or trigger any kind of response via a panic button or siren.
- This device is intended for non-time critical control and management of data and property.
- Our products and services will require certain input parameters to perform hassle free; including but not limited to an active internet connection and live power supply.
- Users are solely liable for storing and managing the data and information that is stored on the device or via services. We are not responsible for the loss or management of such data.
- Do not touch the device or wires connected to the device during lightning.

# WARRANTY CARD

## Limited Warranty Statement



Thank you for selecting the Qubo Smart Home Security Camera by Hero Electronix.

**NOTE :** This is a simplified and concatenated version of the standard warranty terms and conditions. For the complete warranty terms and conditions, please refer to the website link given at the end of the document. Alternatively, you can reach out to our toll free helpline number to know about the same.

### Important

Please retain your receipt as proof of purchase.

HERO Electronix Private Limited warrants to the owner of the Qubo Smart Bullet Camera, (henceforth referred as Device) that the Device will be free of defects in material and workmanship for a period as mentioned below.

Item	Warranty Period	Scope of Warranty
Camera	1 year from the date of Purchase	This warranty covers only the defects in products arising from manufacturing or faulty workmanship.
Adaptor with cable	6 months from the date of Purchase	

During this warranty period, if any defect arises in the Device, HERO Electronix will, at its sole discretion, either (i) repair the device free of cost with either new or refurbished parts, or (ii) replace the Device with a new or refurbished Device that is equivalent to the Device to be replaced. This limited warranty applies to any repair, replacement part or replacement device for the remainder of the original warranty period or for 90 (Ninety) days, whichever period is longer.

This limited warranty is non-transferable.

This limited warranty is only valid in India.

### Instructions:

For specific instructions about how to obtain warranty services for your Device, please contact our toll-free helpline. In general, you will need to deliver the Device in either its original packing or in equally protective packing to the address specified by Customer Service. HERO Electronix will bear all the cost of the return shipping to the owner except with respect to any Ineligible Product (defined below), for which owner will have to bear all the cost.

## This limited warranty does not cover the following (Collectively Ineligible Products)

- (i) If the warranty seal on the Device is broken.
- (ii) Devices that have been subjected to: (a) modifications, alterations, tampering or improper maintenance and repair (b) handling, storage, installation, testing or use not in accordance with any User guide, Placement guidelines, other instructions provided by HERO Electronix (c) abuse or misuse of the product. (d) breakdown, fluctuations, or interruptions in electrical power or the telecommunication network; or (e) Acts of God, including but not limited to lighting, flood, tornado, earthquake or hurricane.
- (iii) errors and damages caused by: (a) liquid ingress, or spilled food, or physical abuse, or normal wear and tear, (b) use of or being connected to any accessory which was not supplied or authorized by HERO Electronix.
- (iv) Plastic components like front or back covers plus rubber components.
- (v) Physical or cosmetic damage to Silicon cover

### Correct disposal of the product

In case you need to dispose of this device at any time in the future, please contact our toll-free helpline. To facilitate effective utilization of resources, we will arrange the disposal of this device as per the prevailing laws. Please note that electrical products should not be disposed of with household waste.



For all product related complaints/assistance, please contact  
Hero Electronix Pvt. Ltd. 503, 5<sup>th</sup> Floor Rectangle 1,  
D4, Saket District Center, New Delhi - 110017  
Email us at: [helpdesk@quboworld.com](mailto:helpdesk@quboworld.com) | Toll Free - 1800-572-5757

[www.quboworld.com](http://www.quboworld.com)

Follow us on



# Support

In case you need further help setting up this device:

- Visit the support section on our website ([www.quboworld.com](http://www.quboworld.com)) and download the detailed user manual.
- To watch a step-by-step setup guide, visit our YouTube page.
- Contact Qubo Customer Care center at 1800-572-5757.

# Disclaimer:

1. For optimal performance, the device requires a Wi-Fi upload speed of more than 2 Mbps.
2. Hero Electronix Pvt. Ltd. reserves the right to make changes to existing services without prior notice, at its sole discretion.
3. Images used are for reference purpose only. Actual product might vary in terms of colour and composition.
4. All related logos are trademark of Hero Electronix Pvt. Ltd.
5. Certain features may not be available at the time of launch.





Connected Smart Devices from



**Hero  
Electronix**

**Hero Electronix Pvt Ltd.**

503, Rectangle - 1, D-4, Saket District Centre,  
New Delhi - 110017

[www.quboworld.com](http://www.quboworld.com)

[helpdesk@quboworld.com](mailto:helpdesk@quboworld.com)

**1800-572-5757**

Follow us on

