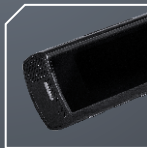


Qubo

A **Hero**
Group Venture

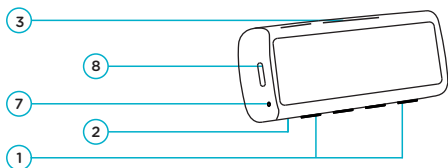
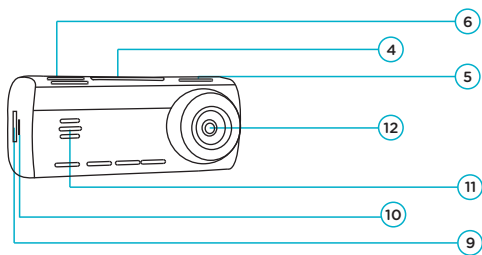
The QBOOK

Qubo 4K DashCam



Product Introduction

A Smart Video Camera for your car to records event happening on road in Ultra HD(4K) format



- | | | |
|------------------------|--------------------------|-------------------|
| 1. Function Key | 2. Microphone | 3. Display Screen |
| 4. Suction holder slot | 5. Rear Cam Channel Slot | 6. Air Vents |
| 7. Reset Key | 8. Power Key | 9. SD Card Slot |
| 10. Power Interface | 11. Speaker | 12. Camera Lens |

Note: The pictures of products, accessories and user interface in this manual are all schematic diagrams and are for reference only. The actual product styles and functions may be updated or upgraded with the version

Product Specifications & Packaging Contents

Model number	:	HCA04
Front Cam	:	3840 x 2160P
Rear Cam	:	1920 x 1080P
Extended Storage	:	MicroSD card, upto 1TB,
Recommended SD Cards	:	C10, U3, V30, 4K UHDS cards
Wi-Fi	:	IEEE 802.11 b/g/n 2.4GHz

In Box Items:

1. 4K Dash Cam Front Camera
2. 3.5 M USB Cable for Front Camera
3. USB Charger
4. Installation Pry Tool
5. Suction Holder for Front camera
6. Rear Camera (Optional)
7. 8 M Micro USB Cable for Rear Camera
(Available with 4K+rear cam variant)

Reset Key

This key reboots the device. Please reboot the device if the Device hangs or functions abnormally.

Power Button Functionality

Function	Action
Display On	Press Once Power Key
Display Off	Press Once Power Key
Factory Reset	Long press Power Key& Hold for 10 Sec till the LED stops Blinking

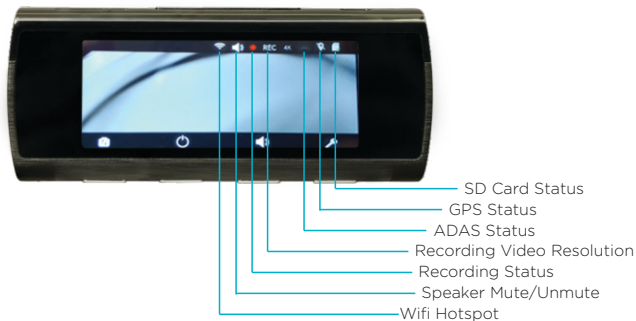
Function Keys

Function	Action
SD Card Format	a) Press any Function key for enabling key functionality b) Press Function Key 4(Settings) c) Press Function Key 2 or 3 to move towards Format SD card option d) Press Function Key 4 to confirm Format SD card Press Function Key 4 for final confirmation
Switch from Front to Rear & Vice Versa	To Switch between rear and front camera view on device screen use function key 1
Sleep Mode	For Sleep mode a) Press function key 2 and Function key 4 for confirmation
Device Speaker Mute/Unmute	Press Function Key 3
Setting Options	Press Function Key 4
Left/right movement	User Function Key 2/3

LED Behavior

Situation	Behavior
Power On	Steady Red
Ready for Commission	Red Blink
If commission not initiated from mobile for long time	Red Blink
Factory Reset Initiated	Steady Green
Factory Reset Completed	Steady Red than Red Blink
Format SD Card	Steady Green
If User not inserted SD card	Red Blink
Any Alert on device	Red Blink

Display Screen Status



Camera Feature

- 1 Journey Vlogging:** Users while travelling through Scenic Routes can utilize Dashcam for Vlogging
- 2 GPS Logging:** With GPS Logging user can view the Event and Trip along with Map access
- 3 Video Quality:** Qubo Dashcam Pro 4K has UHD Video Quality for Recording Purpose and Live View Video Resolution - 3840 * 2160, 2848 * 1600 & 1920 * 1080
- 4 Wide Angle View:** FOV of 140 Degree for expanded view and enhanced experience with a Wide Angle Lens
- 5 Low Light Performance:** Dashcam Pro 4K can record during Night also since it has stable low light performance due to WDR which removes unwanted pixel from the image
- 6 Time Lapse:** Generate Time Lapse Video for the Events for any one day out of last 5 days
- 7 Video Evidence:** In Case of Car Accident of self or as a Witness. Also in case of Road Rage Mitigation it is helpful
- 8 Insurance Claim:** Video Proof helps ease Insurance Claim in case of Theft or Accident
- 9 Evidence against Challan:** In case of crooked Police Harassment for breaking signal or not following rule1
Journey Vlogging: Users while travelling through Scenic Routes can utilize Dashcam for Vlogging

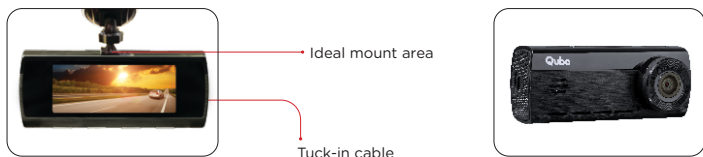
ADAS

ADAS (Advanced Driver Assistant System) is a system that alarms the driver in certain critical situations. It keeps an eye on the road in case the driver seems to have lost attention. ADAS usually consists of the following functions that can be turned on and off separately.

- **Lane Departure Warning System** : This system gives a warning when the car is about to leave the current lane slowly and unnoticed.
- **Forward Collision Warning System:** This system gives a warning when a vehicle in front is approached at high speed, for example in a traffic jam. The Dashcam uses different visual sensors and GPS data to determine whether the situation is critical and should give a warning.
- **Forward Vehicle Start Alarm:** This system warns the driver when the vehicle in front is driving away but the driver's car remains stationary.
- **Pedestrian Alert:** This System warns the driver when a human or animal is detected in front of vehicle. The Dashcam uses different visual sensors to determine whether the situation is critical and provide a warning to driver.

Installation

Process Front Camera



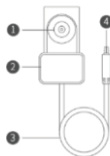
1. Clean the Windshield area where the Dashcam is to be installed.
2. Remove the protective film from the device, Connect the Dashcam with suction mount provided in the box and place your device on the windshield
3. Attach the USB Cable with the Dashcam and with the help of Installation Tool/Pry tool you can tuck-In the Cable properly by lifting the Roof Cover.
4. Connect it with the Power Adaptor and insert the adaptor into car 12V charger socket.
5. Please insert SD Card in the SD Card slot to save the recorded videos. Please use C10, U3, V30, 4K UHDS cards.
6. Turn on the Car Ignition and check if the Dashcam gets a Red LED Indication. Device then announces that "QuboDashcam is ready for Setup." Download the App and follow further steps from the App.

Note: We recommend to first install the dashcam and then mount it on the Windshield for your convenience.

Rear Camera

Product Instructions

1. Rear Camera
2. Mount with double sided tape
3. Rear Camera Power Cable
4. Mini USB 8PIN Power Port



Note: Illustrations of the product, accessories, and user interface in the user manual are for reference purposes only. The actual product and functions may vary.

Specifications:

Input: 5V= 0.5A

Resolution: 1920×1080

How to Use:

The camera is used as an accessory Qubo Smart Dashcam cam Pro 4K in-car products and needs to be used with a main device. After the camera is installed and connected with the front/main camera correctly, the camera can record and store the image from the rear of the vehicle.

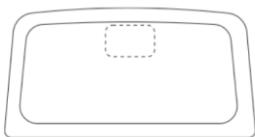
- This camera is powered by the main device. When the Front camera starts operation, the rear camera will be turned on automatically. When the front camera is turned off or sleeps, the camera will also be turned off automatically.
- The front camera provide power to the rear camera only when the front camera receives power from an external power source.
- The image acquired by the camera is stored in the microSD card of the front camera automatically. As the storage limit is reached for the microSD card, the earliest front-recorded and rear-recorded images will be overwritten by the latest images and deleted automatically

Installation

Process Rear Camera

1. Paste the electrostatic sticker:

Clean the rear windshield and apply electrostatic sticker on the recommended area as shown in the figure below. Step back from edge of the windshield and choose a flat and smooth installation surface.

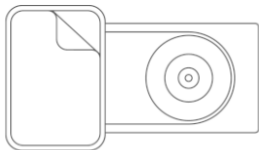


2. Installing the rear camera.

Peel off the protective film from the adhesive sticker on the base of the mount, and paste the rear camera onto the electrostatic sticker in the dotted area.

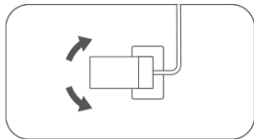
3. Connecting the power supply.

Connect the rear camera with Power cable, As shown in the picture below, run the wire along the top of the rear windshield, pillar, top of the side windows to the main device. Plug the Mini USB 8PIN power port into the front device (the AV/IN port of the main device).



4. Adjusting the dash cam angle.

Turn on the front camera and switch to rear camera mode. Adjust the camera angle based on the preview screen to ensure that the camera is facing the back of the vehicle.



The installation and wiring methods for different vehicles may differ from what described in the Quick Start Guide. We recommend installation shall be conducted by a professional installer.

App Download Instructions

Step 1.

Search for QuboPro on the Google Play Store and App Store or you can **Scan the below QR Code** to download the App-



App Link - <https://bit.ly/3Pjsl2n>

Step 2.

Install QuboPro App

To Connect the 4k Dashcam with the App

Open the App and Choose the 4k Dashcam. Then App will automatically search for available Wi-Fi Hotspots. Choose the one of the Dashcam. It will get auto connected from there. If required, enter the details for the same as follows-

Default Wi-Fi Name : Qubo_DashCAM_XXXXXXX

Default Password : 12345678

(Note: During the Installation of the device you will be asked to change your Default Device Wi-Fi Name and Password. Please do so for your device security.)

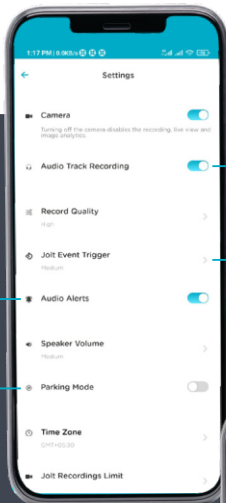


App Screen Attributes



Settings Screen

Attributes



To enable/disable audio alerts and sound from Dashcam

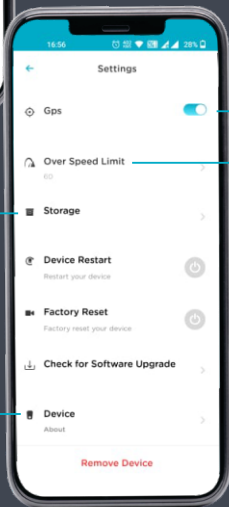
To enable/disable parking mode (works with Hardwiring Kit only)

SD Card Storage occupied

Details about the Device

Option to enable/disable audio track recordings

Sensitivity of the Jolts



To enable/disable GPS Mode

To enable/disable and set the Over Speed limit for alerts

Remove Device

Recording Access Options

CONTINUOUS RECORDING

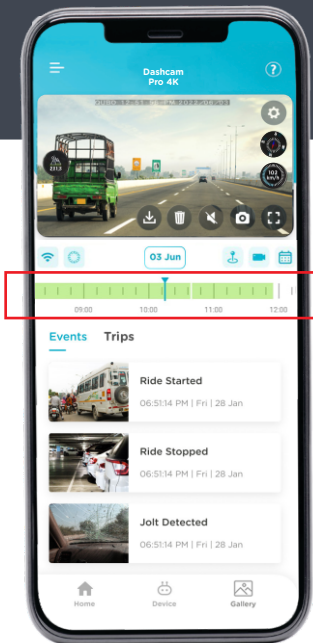
To access all the captured recordings, please use the Timeline Bar (Marked in red). Green color marks the area which has the stored recordings.

EVENT BASED

The Dashcam Pro 4K records specific Events like Jolt detection, Ride start & Ride stop etc which can be accessed from the Events tab.

TRIP BASED

The Dashcam Pro 4K also creates recordings of your multiple Trips which can be accessed from the Trips tab.



Safety

Precautions

1. Qubo Smart Dashcam Pro 4K records videos of outside moving vehicles. It can't protect drivers and passengers from any accidents. We shall not take any responsibility if the user gets involved in any traffic accident and/or bear any loss due to product failure, information loss, or product operation.

2. Due to differences in vehicle type, driving preferences, the environment, and other differences, parts of the product or the whole product may not work normally in some circumstances. The device may not record normally due to loss of power source, abnormal temperatures and/or humidity, collisions, damage to the Micro SD card, and other reasons. We do not guarantee that all the recorded videos will be saved completely in any given situation. The images recorded by this product are for reference only.

3. Install the product correctly. Do not block the driver's vision. Do not obstruct the air bag. Keep the product at least 20cm away from the driver and passengers. Incorrect installation of the product may cause product failure and injury.

4. Keep this product away from strong magnetic fields to avoid damage.

5. Do not insert or pull out the Micro SD card when the product is working to avoid damaging the Micro SD card.

6. Use a Micro SD card with storage capacity between 16GB and 1TB, and reading and writing speed not lower than Class10. Format the Micro SD card before using it.

7. Micro SD card may be damaged after repetitive use. Replace Micro SD cards in time to maintain proper recording.

We shall not bear any responsibility caused by failed Micro SD cards.

8. . The product can record and save footage of traffic accidents, but we do not guarantee all accident footage can be recorded and saved.

9. Do not use this product in temperatures higher than 65° C or lower than -5° C.

10. Do not shake or press the product. Strong impact or shaking may cause irreparable damage to the product.

11. Do not clean this product by chemical solvents or cleansers.

12. Use this product within the scope of the law.

13. Avoid chemical cleansers and solvent that can damage plastic components. You should clean the camera lens regularly to improve the quality of recorded video. Wipe the lens with a non-scratch lens cloth, optionally dampened with isopropyl alcohol. Allow the lens to air dry.

Troubleshooting

My camera feels warm while it is operating.

It is normal for the camera to feel warm during typical use, especially while it is recording high-resolution video or transmitting a Wi-Fi signal.

My memory card has degraded and needs to be replaced

All micro SD memory cards wear out after they are overwritten a large number of times. Periodically formatting the card can extend the useful life and improve performance. Because the Qubo Qubo Dashcam Pro 4K records continuously, you may need to replace the memory card periodically. Your device detects memory card errors automatically and alerts you when it is time to format or replace your memory card.

You can take these actions to help extend the useful life of the memory card.

- Format the memory card at least one time every six months
- If the device displays a memory card error alert, first try formatting the memory card and then, if necessary, replace the memory card
- Turn off the device when your vehicle is not in use
- If your device is not connected to an ignition- switched vehicle power outlet, you should turn off the device when your vehicle is not in use to prevent the Qubo Dashcam Pro 4K from recording unneeded footage. Transfer saved video footage to a computer. The memory card lasts longer when more free space is available on the card
- Use a memory card with a higher storage capacity
- Because higher-capacity memory cards are overwritten less frequently, they usually last longer

- Use a high-quality memory card with a speed rating of class 10 or higher
- Purchase your replacement memory card from a high-quality manufacturer and a reputable vendor

My video recordings are blurry

- Clean the camera lens
- Clean the windshield in front of the camera
- Verify the area of the windshield in front of the camera is cleared by the windshield wipers, and move the device, if necessary

My video recordings are choppy or incomplete

- For the best camera and video results, use a high-quality memory card with a speed rating of class 10 or higher. A slower memory card may not record video quickly enough
- If you are viewing videos on your smartphone using a wireless connection to the camera, try viewing them in another location with less wireless interference, or try transferring videos to the smartphone
- Transfer important recordings to a computer or smartphone, and format the memory card
- If the device displays a memory card error alert, first try formatting the memory card and then, if necessary, replace the memory card
- Update your device to the latest software

My Dashcam does not connect with the App when my phone is connected with Wireless Apple Car Play/ Android Auto

Wireless Apple Car Play/ Android Auto also connect to your phone through a wi fihotspot. Hence, please disconnect them temporarily while connecting your phone to dashcam to set up or view/ download videos from the dashcam. Please note that your dashcam records when the car's ignition is on even if your phone is not connected to the dashcam.

Parking Mode feature is not working

For Parking Mode feature to work you will need a separate Hardwiring Kit which will be connected with the Fuse Box of the Car. You can purchase it separately from the market.



**For more queries,
please scan the QR Code**

LIMITED WARRANTY

Statement

Thank you for selecting the Qubo Dashcam Pro GPS by Hero Electronix.

NOTE : This is a simplified and concatenated version of the standard warranty terms and conditions. For the complete warranty terms and conditions, please refer to the website link given at the end of the document. Alternatively, you can reach out to our toll free helpline number to know about the same.

IMPORTANT : Please retain your receipt as proof of purchase.

HERO Electronix Private Limited warrants to the owner of the Qubo Dashcam Pro GPS, (henceforth referred as Device) that the Device will be free of defects in material and workmanship for a period as mentioned

Item	Warranty Period	Scope of Warranty
Device	1 year from the date of Purchase	This warranty covers only the defects in products arising from manufacturing or faulty workmanship.
Car Charger / Cables	6 months from the date of Purchase	
Hardwiring Kit (If Applicable)	6 months from the date of Purchase	
RTC Battery	6 months from the date of Purchase	

During this warranty period, if any defect arises in the Device, HERO Electronix will, at its sole discretion, either

(i) repair the device free of cost with either new or refurbished parts, or
(ii) replace the Device with a new or refurbished Device that is equivalent to the Device to be replaced. This limited warranty applies to any repair, replacement part or replacement device for the remainder of the original warranty period or for 90 (Ninety) days, whichever period is longer.

This limited warranty is non-transferable.
This limited warranty is only valid in India.

Instructions

For specific instructions about how to obtain warranty services for your Device, please contact our toll-free helpline. In general, you will need to deliver the Device in either its original packing or in equally protective packing to the address specified by Customer Service. HERO Electronix will bear all the cost of the return shipping to the owner except with respect to any Ineligible Product (defined below), for which owner will have to bear all the cost.

THIS LIMITED WARRANTY DOES NOT COVER THE FOLLOWING (COLLECTIVELY INELIGIBLE PRODUCTS)

- (i) If the warranty seal on the Device is broken.
- (ii) Devices that have been subjected to: (a) modifications, alterations, tampering or improper maintenance and repair (b) handling, storage, installation, testing or use not in accordance with any User guide, Placement guidelines, other instructions provided by HERO Electronix (c) abuse or misuse of the product. (d) breakdown, fluctuations, or interruptions in electrical power or the telecommunication network; or (e) Acts of God, including but not limited to lightning, flood, tornado, earthquake or hurricane.
- (iii) errors and damages caused by: (a) liquid ingress, or spilled food, or physical abuse, or normal wear and tear, (b) use of or being connected to any accessory which was not supplied or authorised by HERO Electronix.
- (iv) Plastic components like front or back covers plus rubber components.
- (v) Physical or cosmetic damage to Silicon cover

CORRECT DISPOSAL OF THE PRODUCT



In case you need to dispose of this device at any time in the future, please contact our toll-free helpline. To facilitate effective utilisation of resources, we will arrange the disposal of this device as per the prevailing laws. Please note that electrical products should not be disposed of with household waste.

FOR ALL PRODUCT RELATED COMPLAINTS/ASSISTANCE, PLEASE CONTACT

Hero Electronix Pvt. Ltd. 503, 5th Floor Rectangle 1,
D4, Saket District Center, New Delhi - 110017

Email us at: support@quboworld.com | 1800-572-5757
www.quboworld.com